

Geo-Mattress® Pro

Pressure Redistribution Foam Mattress



Geo-Mattress Pro®

Affordability and effectiveness

Single layer, zoned construction delivers excellent value for budget-conscious facilities.

- 5 years, non-prorated warranty
- Weight limit: 300 lbs.

Flammability Protection: Certified conformance to NFPA 101 (Life Safety Code); Cal. Tech Bulletin #117; 16 CFR 1632 and 1633; and BFD IX-11.

Primary Use:

- Prevention of Skin Breakdown

Patient Indications:

- General patient population
- Moderate – High Risk for skin breakdown (e.g., Braden 13-26)
- Decreased mobility
- Repositions frequently by self or caregiver

Key Advantages:

- Geo-Matt® anti-shearing surface
- Heel Slope™
- Hidden zipper for infection control

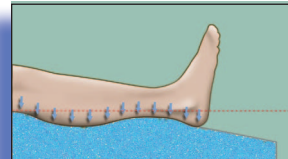
Item #	Description
AL-85757-05	84" L x 35" W x 6" H
AL-85757-04	80" L x 35" W x 6" H
AL-85757-01	75" L x 35" W x 6" H

Packed with value-added features:



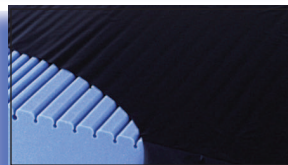
Segmented Geo-Matt® Design.

Clinically proven Geo-Matt® design creates a unique, anti-shearing top surface. 800 individually responsive cells in distinct head, torso, and foot zones enhance therapeutic support and comfort.



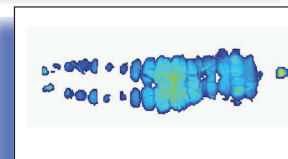
Exclusive Heel Slope®.

Subtle taper redistributes load to pressure-tolerant lower legs. Delivers heel pressures 27% lower than flat designs.



Fluid-proof, wipe-clean cover

with ultra-low moisture vapor transmission rate (MVTR). Bacteriostatically-treated top, durable tri-laminate bottom. Hidden zipper design for easier, more thorough cleaning and superior infection control.



Outstanding pressure redistribution

across the surface ensures low average of peak pressure at vulnerable sacrum and heels.

ALCO[®]
Sales & Service Co.