

# Geo-Mattress® Plus

## Pressure Redistribution Foam Mattress



### Geo-Mattress Plus®

*Performance...Plus!*

Dual-layer, design perfectly blends patient comfort and clinical effectiveness.

- 6 years, non-prorated warranty
- Weight limit: 400 lbs.

Flammability Protection: Certified conformance to NFPA 101 (Life Safety Code); Cal. Tech Bulletin #117; 16 CFR 1632 and 1633; and BFD IX-11.

#### Primary Use:

- Prevention of Skin Breakdown

#### Patient Indications:

- General patient population
- Moderate – High Risk for skin breakdown (e.g., Braden 13-26)
- Decreased mobility
- Repositions frequently by self or caregiver

#### Key Advantages:

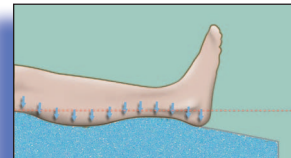
- Geo-Matt® anti-shearing surface
- Heel Slope™
- Hidden zipper for infection control

Item #	Description
AL-85756-05	84" L x 35" W x 6" H
AL-85756-04	80" L x 35" W x 6" H
AL-85756-01	75" L x 35" W x 6" H

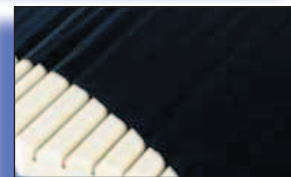
### Packed with value-added features:



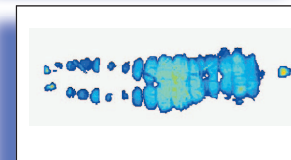
**Segmented Geo-Matt® Design.** Clinically proven Geo-Matt® design creates a unique, anti-shearing top surface. 800 individually responsive cells in distinct head, torso, and foot zones enhance therapeutic support and comfort.



**Exclusive Heel Slope®.** Subtle taper redistributes load to pressure-tolerant lower legs. Delivers heel pressures 27% lower than flat designs.



**Fluid-proof, wipe-clean cover** with ultra-low moisture vapor transmission rate (MVTR). Bacteriostatically-treated top, durable tri-laminate bottom. Hidden zipper design for easier, more thorough cleaning and superior infection control.



**Outstanding pressure redistribution** across the surface ensures low average of peak pressure at vulnerable sacrum and heels.

**ALCO®**  
Sales & Service Co.