

# Assembly FloorLine-i and FloorLine-i Plus

AL-85305

AL-85306

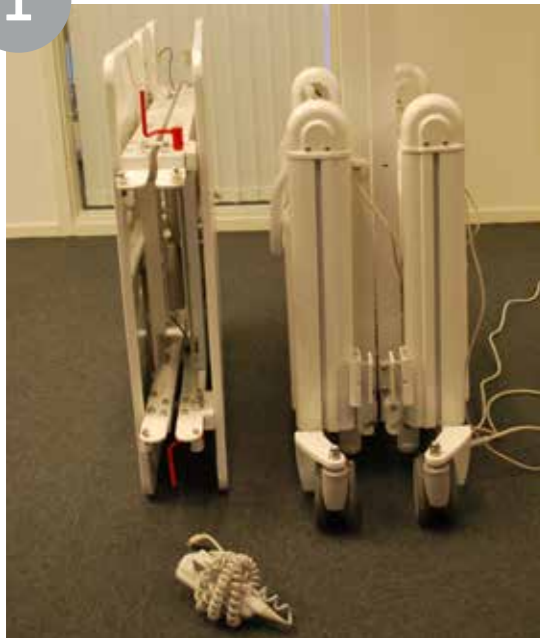
**ALCO**<sup>®</sup>  
Sales & Service Co.

800-323-4282

## Requirements

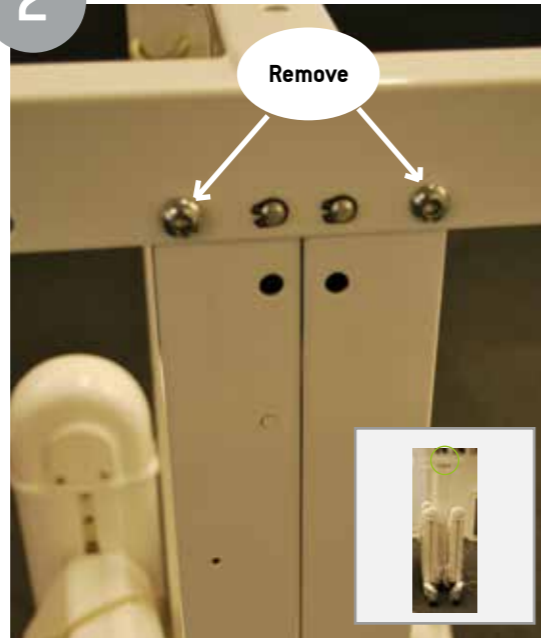
1. Two assemblers
2. A mains power outlet/power-point since the backup battery may not be fully charged at time of delivery.
3. 3mm & 5mm Allen Keys
4. 13mm & 17mm spanner/socket wrench

1



Included in the bed delivery: Folded Bed Base, Attached Handset, mattress retainers, Head/Foot Boards and folded Mattress Platform.

2



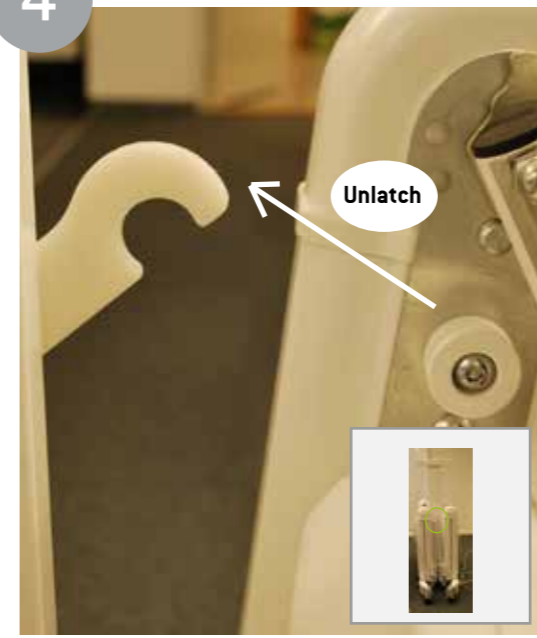
Ensure all castors are locked for safety. Then use the 5mm Allen Key, remove the 4 Centre Saddle Locking Bolts. Two each are located on either side of the saddle.

3



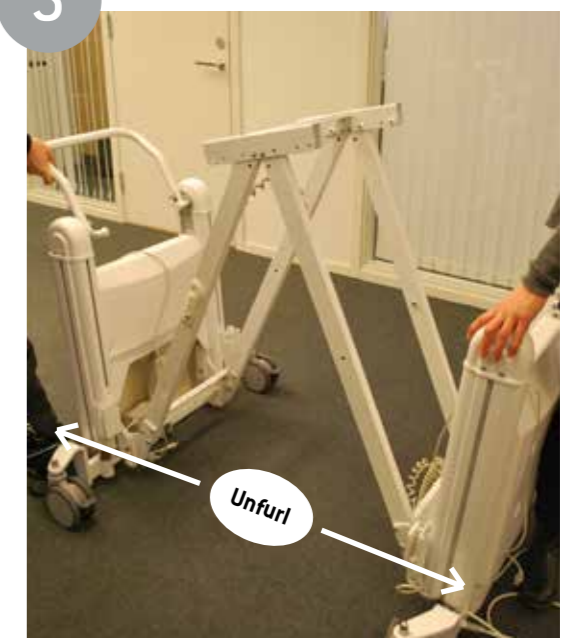
Unlock two of the castors on one side and keep the other two on the other side locked.

4



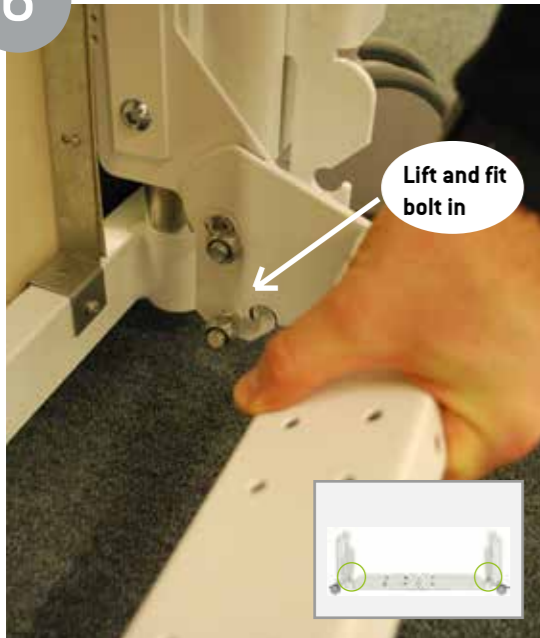
On both sides, unlatch the plastic transport latch that holds the beam against the pedestal ends.

5



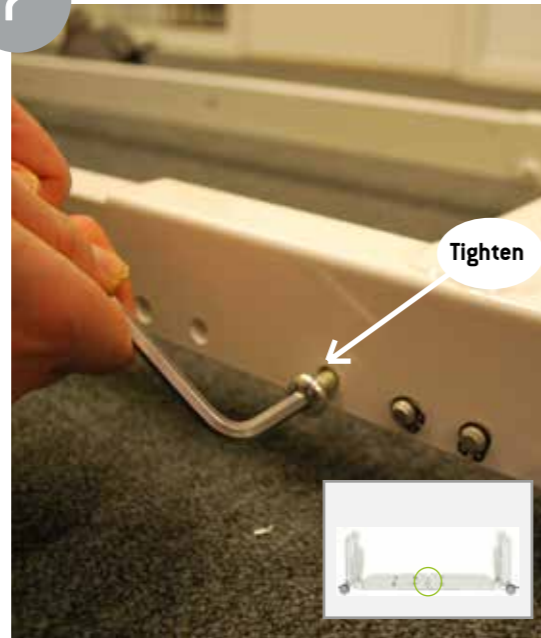
Stand at the side of the pedestal ends, one person on each side and unfurl the bed until it's flat. One person holds still and one pulls the bed out (on the side with unlocked castors). Make sure no cables are in the way when unfolding the bed!

6



Attach the bolts to it's position. The bolts may be a tight fit. Gently lifting the saddle aids fitting each bolt in.

7



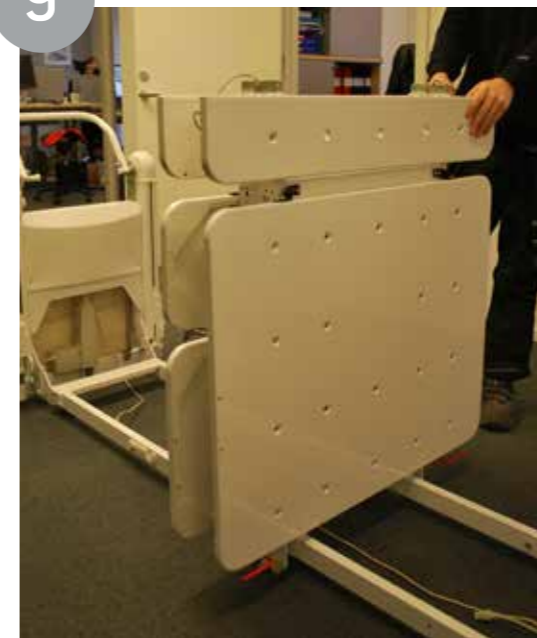
Using the 5mm Allen Key, put back/insert and tighten the 4 locking bolts into the same holes on the saddle.

8



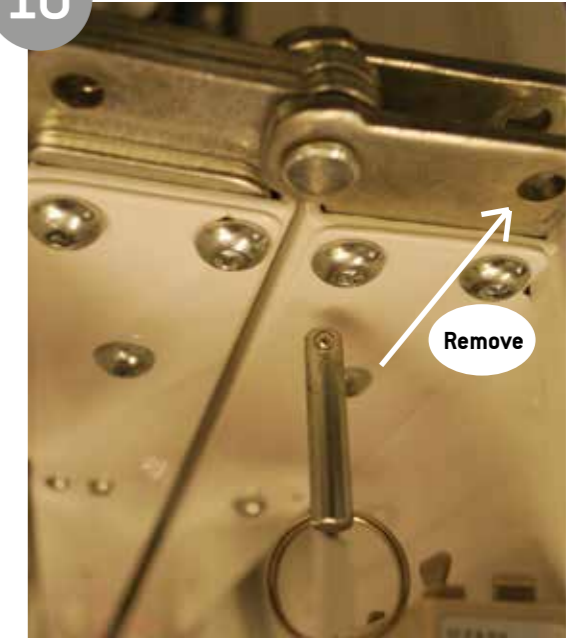
Using the 17 mm spanner, tighten the 8 Nyloc bolts (2 Lower Beam Hinging Bolts and 2 Locking Latch Bolts at each end).

9



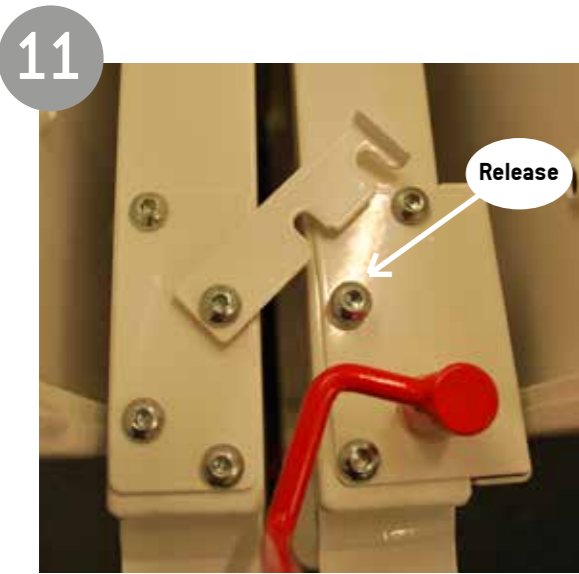
Place the mattress platform onto the bed base as in the picture. The backrest panel (largest panel) should be positioned at the head end of the bed base.

10

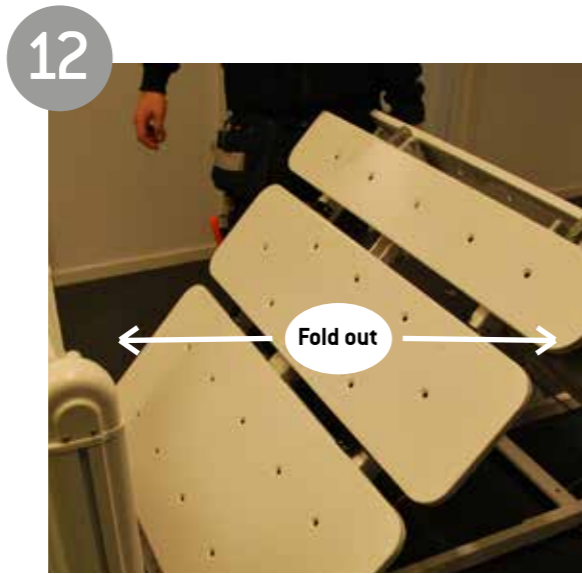


Remove the two locking lanyard pins from either side of the centre hinge section/upper beam saddle.

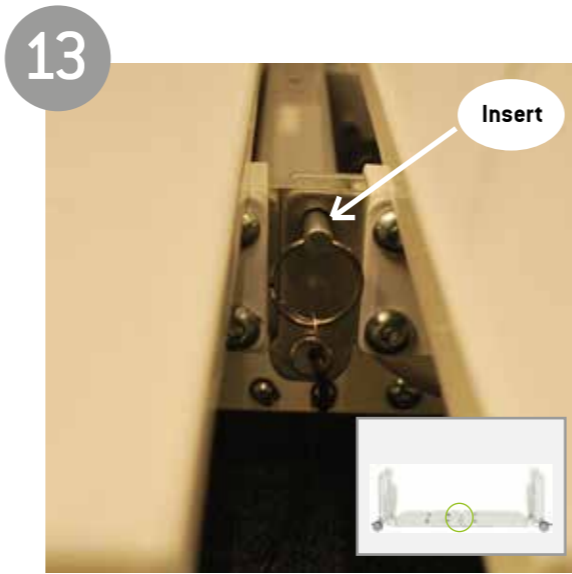




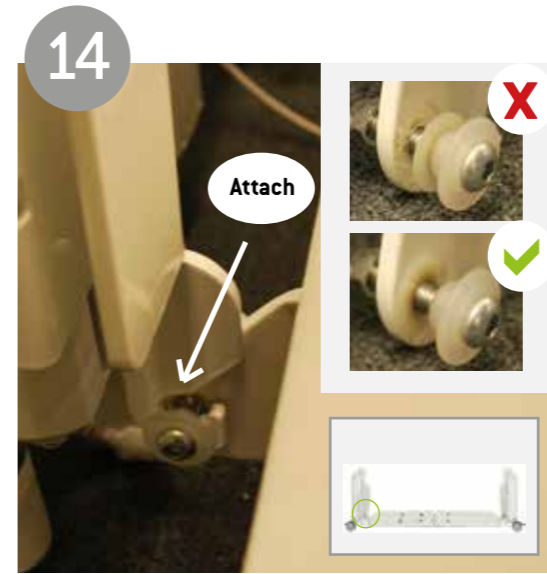
Unlatch the metal transport latch.



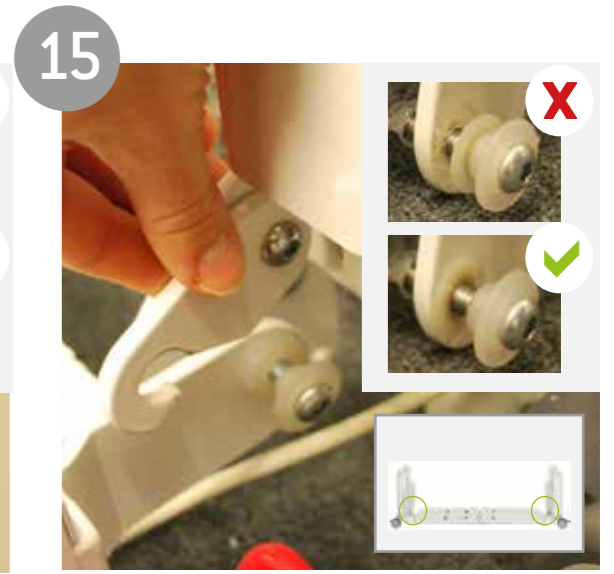
Fold out the mattress platform until the beams are straight.



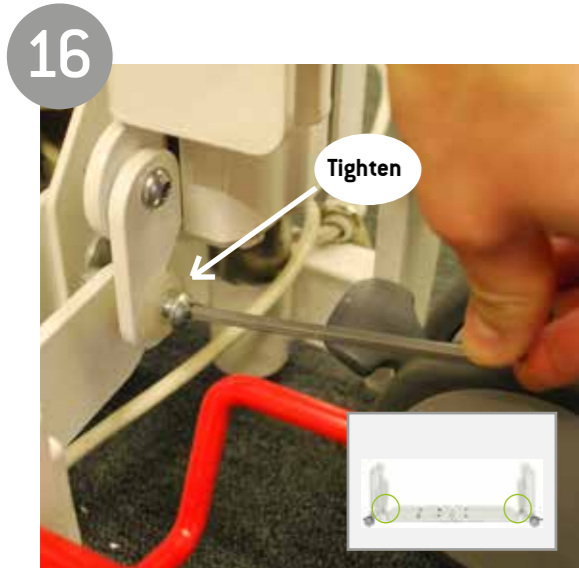
Re-insert the 2 locking lanyard pins, to lock the mattress platform into a flat position.



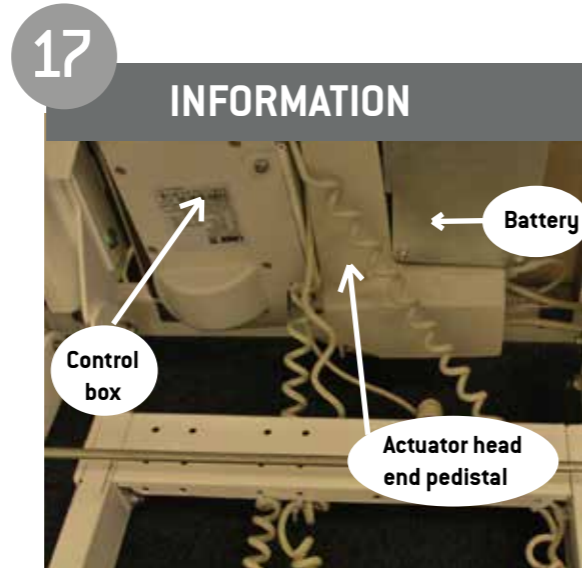
At the foot end: lift the beams to slot the 2 Platform Bracket's Fixing-Bolts (Nylon Bush) into the 2 Pedestal End's Fixed J-Hooks. Lift the beams to fully seat the fixing-bolts. The hook should be placed in between the 2 nylon bushes as in the picture.



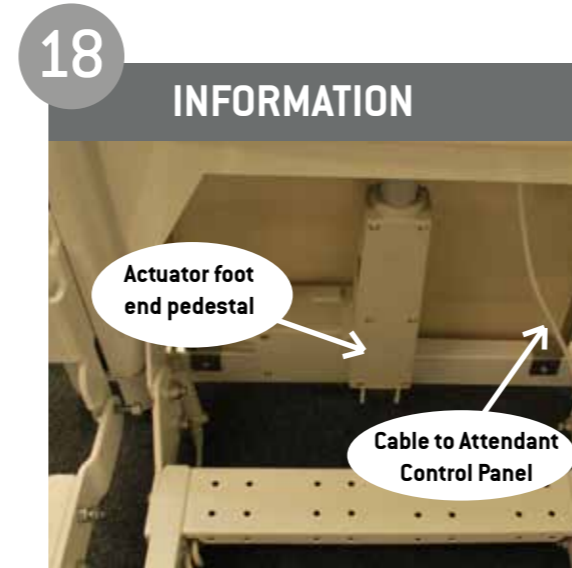
Repeat the steps from picture 14 at the head end.



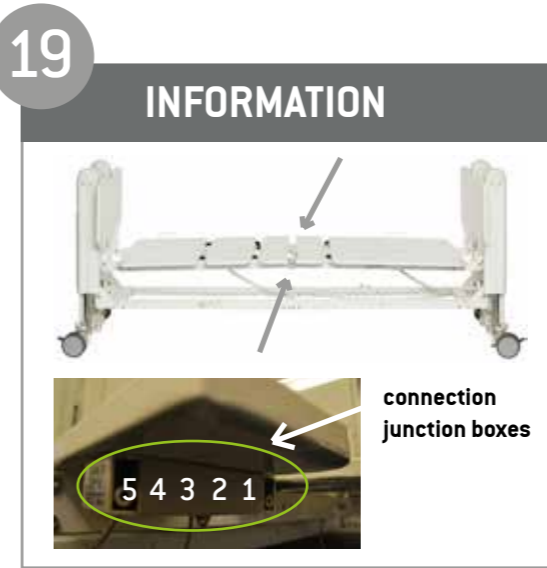
Using the 5mm Allen Key, firmly tighten all 4 Upper Beam Fixing-Bolts, ensuring that each bush is correctly located in its J-Hook.



The cables run from the control box and battery at the head end side. *Image 18-20 only applies for FloorLine-i Plus.*



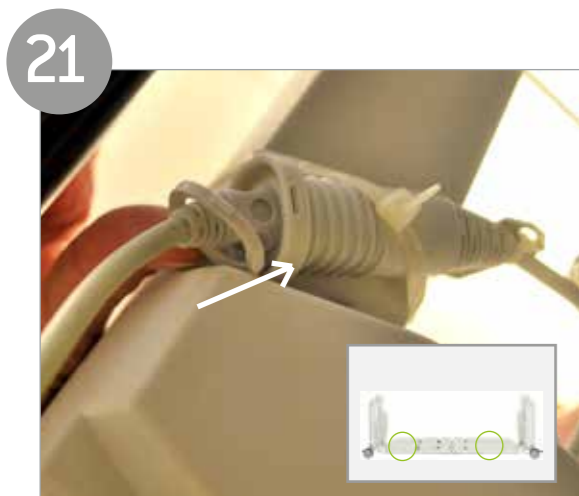
The cables run from the actuator foot end pedestal and the attendant control panel at the foot end side.



The picture shows the ports in the under bed light box where the cables should be inserted.

FROM	TO
Backrest Actuator (red mark)	Control Box Port 1. (red mark)
Head End Lift Actuator	Control Box Port 2.
Kneebreak Actuator (see picture 21)(green mark)	Control Box Port 3. (green mark)
Foot End Lift Actuator	Control Box Port 4.
Under Bed Light Junction #1. (yellow mark)	Control Box Port HB
Under Bed Light # 1, Port 1. (blue mark)	Under Bed Light # 2, Port 5.
Under Bed Light # 2, Port 1.(orange mark)	Attendant Control Panel
Handset	Under Bed Light # 2, Port 2 or 4.
Port Plugs	Empty Ports
Under Bed Light # 1 (black mark) *	Control Box Port 8

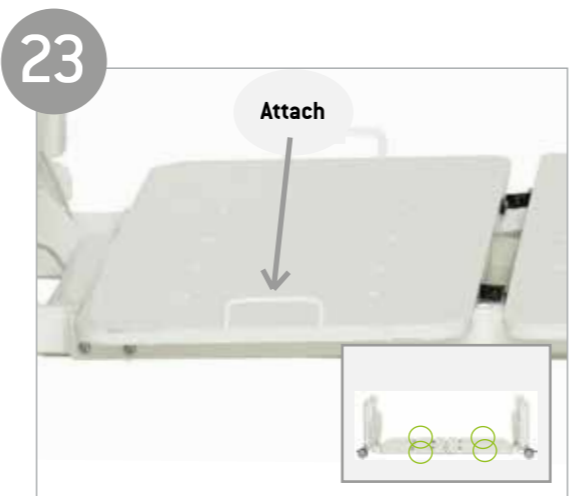
\*Only EBC beds.  
Insert the cables as in table. Then raise the bed.  
Note: Under bed light #2 is on the same side as the black castor.



Insert the small plastic ring into the cable both for the backrest actuator cable and kneebreak actuator cable.



Place the end boards on both sides of the bed.



Attach the mattress retainers on both sides of the bed. 2 on each side.



The bed is ready for use.