

AL-84809

5 Year Warranty

**The Only Bed
Cables You Will
Ever Need**

The closest to
"nurseproof" you can get.



Improve HCAHPS scores with this elegantly simple solution. The magnetic connection snaps a secure connection in place every time.

If 37 pins are not fully connected, caregivers have a 0% chance of success to respond to what the patient needs or wants. Having no connection, a faulty connection, or a single bent pin, the repercussions could dramatically impact patient satisfaction.

The BlackJack Magnetic Breakaway Bed Cable is universally applicable to all bed types and nurse call systems. For hospitals with multiple bed models or nurse call systems, the BlackJack Cable can make them all compatible.

BlackJack Cables have 37 pins that are individually spring loaded, gold plated, and magnetically backed. BlackJack guarantees connectivity while also resisting corrosion and damage. Beyond that, they made to last, with the lowest replacement rate of any hospital bed cables on the market.

Optimize for success with 100% connectivity, 100% of the time.

Key Benefits

- Using BlackJack leads to greater increase of nurse call connectivity. Rise in connectivity results in greater patient satisfaction.
- 9 out of 10 hospitals with BlackJack see a rise in HCAHPS scores after installation.
- Cuts down repair time for cables to negligible.
- On average, BlackJack Cables pay off their acquisition cost within 18 months of installation, in cost savings of replacement cables, technician time, and lack of damage to walls and other equipment.

We have configurations for nearly all nurse call systems and bed types, so please contact us for any assistance or guidance in figuring out the right parts for your needs.

Regardless of if you have multiple bed types or nurse call systems in your facility, installing BlackJack Cables will render them all universally compatible with each other.



Magnetic Phono Jack



Male

AL-84809

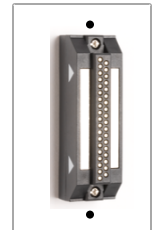


Magnetic Right Angle 37 pin cable



Female

Magnetic inline 37 pin cable



Magnetic Cover



Dummy Plug

Break	Wall Jack	Bed Type	Wall Magnet Orientation	Part Number	Description
Wall Side Break		Hill-Rom Linet	Inline	XF	Magnetic female + inline 37 pin cable
		Stryker ArjoHuntleigh Umano	Right Angle	XFR	Magnetic female + right angle 37 pin cable
		Hill-Rom & Linet	Right Angle	XFP	Magnetic female + right angle phono jack cable
		Stryker, ArjoHuntleigh & Umano	Right Angle	XMP	Magnetic male + right angle phono jack cable
	Bed Side Break		Hill-Rom Linet	Inline	XF12 & CF
Stryker ArjoHuntleigh Umano			Right Angle	XF12 & CFR	Magnetic female + inline 12" adapter + Conventional Right Angle Male to Female 37 pin cable
		Hill-Rom & Linet	Any	XF12 & Any	Magnetic female + inline 12" adapter + any cable
		Stryker, ArjoHuntleigh & Umano	Any	XF12 & Any	Magnetic male + inline 12" adapter + any cable