

## Installation and Use Instructions

### AL-80518 CordLess® Fall Monitor

- No Cords Between Monitor and Sensor Pads
- Works with two sensor pads simultaneously

**TamperProof™**  
with included Caregiver Key™  
Patented Technology



### AL-80518 CordLess® Fall Monitor

**CAUTION:** If using this monitor with the Change Pad Indicator™ Timed Sensor Pads, this monitor will not indicate when pad life has expired. The pads will still function normally. Call (800) 650-3637 for more information.

**WARNING:** Failure to comply with the warning may result in injury or death. This device is not suitable for all individuals. Other devices may be required. This device is not a substitute for visual monitoring by a caregiver. The manufacturer does not claim that this device will stop elopement and/or stop falls. This device is designed to augment caregivers' comprehensive resident mobility management program. **Test this device before each use. Read the instructions and Legal Disclaimer.**

The AL-80518 Monitor is designed to be installed by the end-user. As such, it is the entire responsibility of the buyer to insure that the system is properly installed and tested. Further, the system is not designed to replace good care giving practices including, but not limited to:

- Direct patient supervision
- Adequate training for staff personnel for fall prevention and elopement
- Testing of the system before each use

WHERE PERMISSIBLE, IT IS THE SELLER'S INTENT TO LIMIT ANY LIABILITY FOR SPECIAL, CONSEQUENTIAL OR INCIDENTAL ECONOMIC DAMAGES TO REFUND OF THE PURCHASE PRICE OR REPLACEMENT OF THE GOODS. SELLER DISCLAIMS ANY LIABILITY FOR COMPENSATORY OR OTHER DAMAGES ARISING OUT OF THE USE OF THE GOODS.

**WARNING:** The manufacturer does not claim that this device will stop elopement and/or stop falls. This device is designed to augment caregivers' comprehensive resident mobility management program.

Limited Warranty: Seller warrants that the goods sold will be free from defects of workmanship and manufacturing, for a period of one year from the date of sale. Other than this limited warranty, seller makes no express or implied warranties. Except for this limited warranty, NO EXPRESS OR IMPLIED WARRANTIES ARE GIVEN AND NO AFFIRMATION OF SELLER, BY WORDS OR ACTION, WILL CONSTITUTE A WARRANTY. THE GOODS BEING PURCHASED ARE BEING SOLD ON A "WITH ALL FAULTS" BASIS. THE ENTIRE RISK AS TO THE QUALITY AND PERFORMANCE OF THE GOODS IS WITH THE BUYER. SHOULD THE GOODS PROVE DEFECTIVE FOLLOWING THEIR PURCHASE, THE BUYER, AND NOT THE MANUFACTURER, DISTRIBUTOR OR RETAILER, ASSUMES THE ENTIRE COST OF ALL NECESSARY INSTALLATION, SERVICING OR REPAIRS.

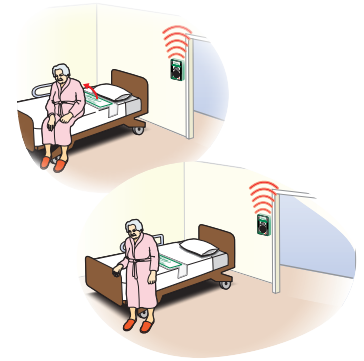
### CordLess® Bed Sensor Pads

#### TEST THE SYSTEM

- Apply pressure to the pad to activate system. The monitor will beep twice when activated. The **Pad 1** or **Pad 2** light on the front of the monitor will blink as long as there is pressure on **Pad 1** or **Pad 2**, respectively.
- The alert will sound whenever pressure is released from pad. Press the "**Reset**" button on front of the monitor or use caregiver key, depending on your reset setting to silent the alert.
- If the **Pad Lost** light is on and system does not test properly, reduce the distance between the monitor and the pad. Retest.

#### BED PAD PLACEMENT

- Place the pad under shoulders to be alerted when resident sits up in bed (fig. 1).
- Place pad under the hips/buttocks to be alerted when the resident vacates the bed (fig. 2).



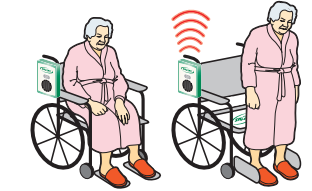
### CordLess® Chair Sensor Pads

#### TEST THE SYSTEM

- Apply pressure to the pad to activate system. The monitor will beep twice when activated. The **Pad 1** or **Pad 2** light on the front of the monitor will blink as long as there is pressure on **Pad 1** or **Pad 2**, respectively.
- The alert will sound whenever pressure is released from pad. Press the "**Reset**" button on front of the monitor or use caregiver key, depending on your reset setting to silent the alert.
- If the **Pad Lost** light is on and system does not test properly, reduce the distance between the monitor and the pad, retest.

#### WHEELCHAIR/CHAIR PAD REPLACEMENT

- Center pad on the chair seat under buttocks



### CordLess® Floor Mats

#### TEST THE SYSTEM

- Step on the floor mat to set off the alert.
- Press the "**Reset**" button on front of the monitor or use caregiver key, depending on your reset setting to silent the alert.

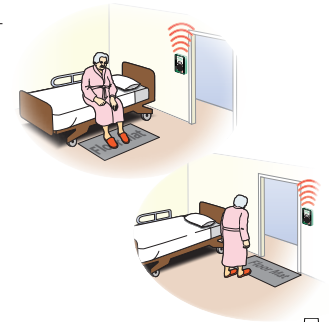
**IMPORTANT:** There must be a 15 second period with no pressure on the floor mat for the AL-80518 to fully reset.

**NOTE:** The status lights do not function when using floor mats

- If the "**Pad Lost**" is on and system does not reset properly, reduce the distance between the monitor and the floor mat. Retest.

#### FLOOR MAT PLACEMENT

- Place floor mat in the desired location such as in a crucial doorway or next to the bed.



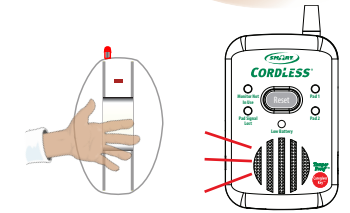
#### Caution: AL-80518 and corded sensor pads/floor mats

Corded sensor pads and or floor mats will override and disable wireless communication with all programmed CordLess® pads when plugged into the AL-80518 fall monitor. To reestablish wireless operation, unplug the corded device and test the CordLess® device(s) as described above.

### PIR Motion Sensor

#### TEST THE SYSTEM

- Wave hand in front of the motion sensor to activate.
- Press the Reset Button on the front of the monitor to silence the alarm or use the Caregiver Key™ depending on your monitor setting.



### IMPORTANT INFORMATION:

Smart CordLess® products utilize wireless technology which is subject to physical and environmental considerations. **These products must be tested by the end user before each use in the setting in which they are to be used.** Please be aware that the transmitter will not be 100% accurate if it is out of the range at any time. **The transmitter is battery operated and the life of the battery will vary based on usage.** Wireless systems and monitors are intended as an addition to good caregiving practices and are not a substitute for proper staffing and patient management practices including, but not limited to, direct visual supervision of all residents by caregiver(s). We recommend that all personnel receive periodic training in the operation of the systems and that the systems are tested before each use.

# Quick Start Instructions

# AL-80518

## 1 Install Batteries, Adjust Settings

Remove the protective boot.

Insert batteries as shown and screw antenna to top of monitor

CordLess® Monitor settings:  
Volume, 3 Tone Options

Alert Tone/Melody Adjustment

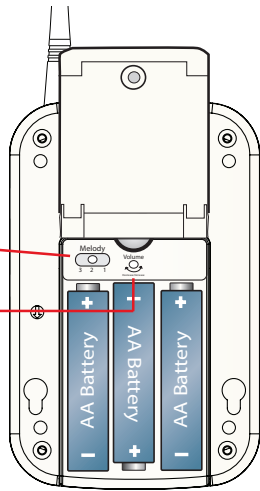
Default Setting: Melody 1

Alert Volume Dial

Default Setting: Full Volume

Close the battery door and secure it with the small Philips-head screw.

Place the monitor in its protective plastic boot.



**\*Before programming: Activate each pad by applying 30 seconds of pressure.**

## 2 Program Sensor Pad(s)

The CordLess® Monitor can work in two modes:

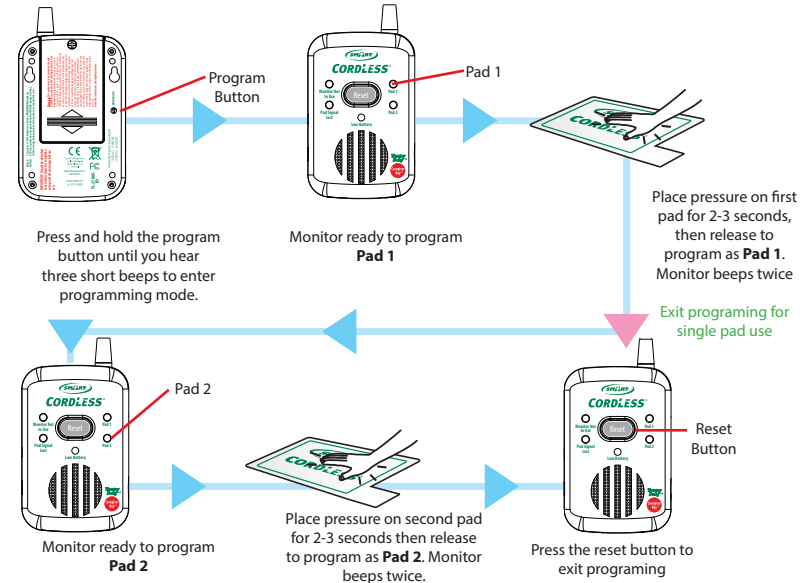
1. With one CordLess® sensor pad
2. With two CordLess® sensor pads

(See separate instructions for CordLess® floor mat operation)

Place one or two CordLess® bed or chair pads within reach. Each sensor pad comes with a CordLess® transmitter connected and turned on.

Press and hold the program button on the back of the monitor until you hear three short beeps to enter programming mode. Release the button.

**\*NOTE: When there are two pads programmed to the monitor and no one is on the pads, press the reset button twice to reset the monitor.**



## 3 Test the System - Pressure Pads

Apply pressure to pad.

Monitor will beep two times.

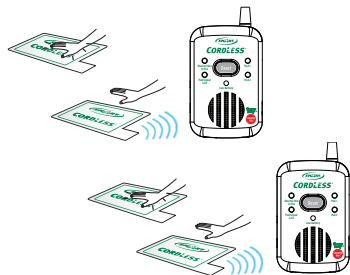
Status light should blink while pressure remains on pad.

When pressure is removed, monitor will alarm.

Press the reset button to silence alarm or use caregiver key depending on your setting.

A. Test Pad 1

B. Test Pad 2



**IMPORTANT:** When using the AL-80518 CordLess® Monitor with two pads, place all the components (the two bed pads and monitor) within 15 feet of each other. Test the system before each use.

## Resetting the Monitor/ Tamper Proof™ Mode with Caregiver Key™ (Optional)

Caregivers can choose to reset the CordLess® Monitor in either of two ways:

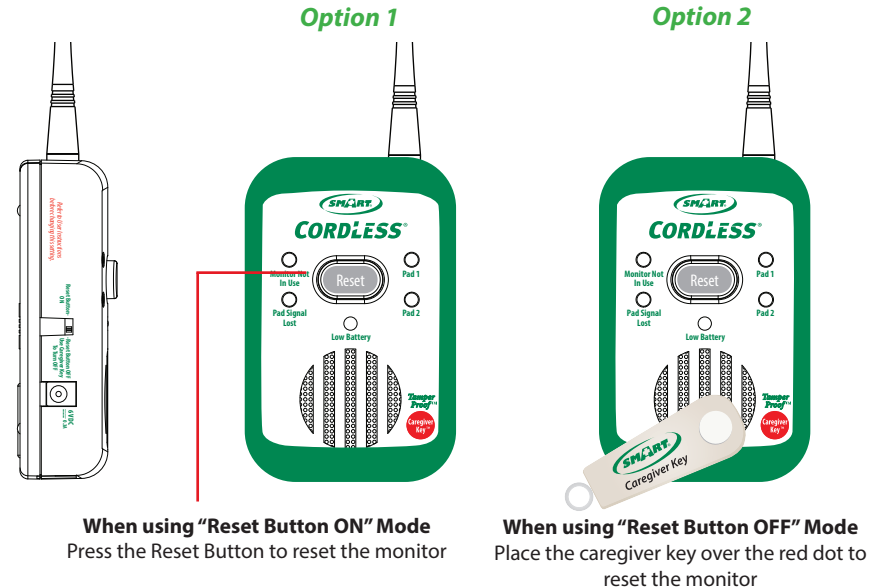
**“Reset Switch ON”:** Pressing the Reset button on the front of the monitor.

**“Reset Switch OFF”:** Placing the optional Caregiver Key over the red dot on the front of the monitor.

**Option 2 allows only the caregiver to reset the monitor.**

See switch on side of the monitor to select the monitor of your choice.

For more information about the Caregiver Key™ and how it can be used in your facility's Fall Risk Assessment Program call 800-650-3637



**When using “Reset Button ON” Mode**  
Press the Reset Button to reset the monitor

**When using “Reset Button OFF” Mode**  
Place the caregiver key over the red dot to reset the monitor

