

# AL-79727

## Geo-Wave™ Specialty Recliner Cushion



### Ideal for:

- geri-chairs
- dialysis
- chemotherapy
- cardiac care

#### **Reduces Shear.**

Unique surface design minimizes the effects of reclining-induced shearing.

#### **Assists Positioning.**

Natural lumbar and thigh supports help to comfortably position users in both the upright and reclining positions.

#### **User-Friendly.**

Lightweight, yet durable. Wipe-clean, non-skid cover attaches easily to the chair.



# ALCO®

**Sales & Service Co.**

# AL-79727

## Geo-Wave™

### Specialty Recliner Cushion



#### Fluid-repellent Cover

Removable zippered cover features non-slip top fabric and durable non-skid bottom. Wipes clean with neutral suds or approved cleaning agent.



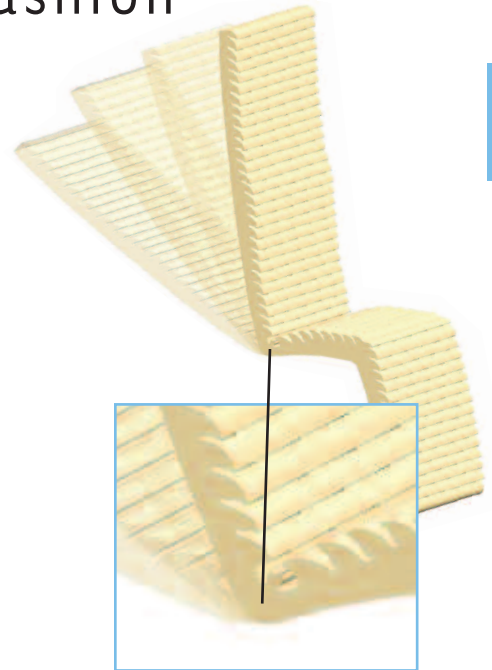
#### Simple Secure Attachment

Three elastic hook and loop straps located at the head, torso and foot help anchor the cushion to the chair.



#### Optional Accessory Armrest Pad Set

designed for additional user comfort with foam padding and wipe-clean cover. Unique design adjusts for chair widths ranging from 18" to 28". Includes hook and loop straps to help secure to the chair. (One set required per chair)



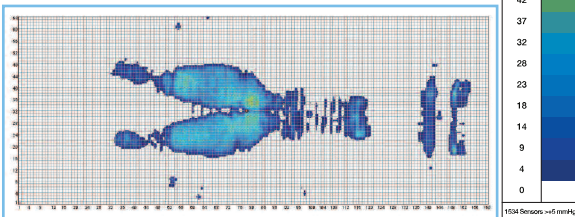
#### Proprietary Wave Profile

Unique segmented fins are specifically engineered to address the effects of reclining-induced shearing that is typical of institutional seating. Patent-pending design has three distinct zoned orientations to reduce shear in multiple directions for specific seating areas. Use of this cushion also helps to reduce pressure when the user is in the upright or reclined position.



#### Protection from Pressure

XSensor® computerized pressure mapping confirms outstanding pressure distribution and low average peak pressures.



Subject: Male, 5'10", 175 lb.

Dimensions: 2.75" high x 68" long x 18"/22"/28" wide

Item	Description	Qty
AL-79727-18	Geo-Wave cushion w/cover, 18" wide	1/cs
AL-79727-22	Geo-Wave cushion w/cover, 22" wide	1/cs
AL-79727-28	Geo-Wave cushion w/cover, 28" wide	1/cs
<b>Warranty:</b> 18 month <b>Weight limit:</b> 300 lb. on 18" and 22"; 500 lb. on 28"		

**ALCO**<sup>®</sup>  
Sales & Service Co.