



Non-Tilt Overbed Tables
AL-74881, AL-74883

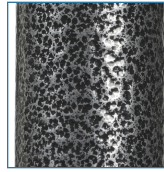


FIGURE A



FIGURE B

- Walnut, wood grain low-pressure laminate top
- Table top can be raised or lowered in infinite positions between 28" - 45"
- "H" base provides security and stability
- Silver Vein (Figure A) for (Model AL-74883) is easy-to-maintain and less institutional looking
- Tabletop locks securely when height adjustment handle is released
- It can be raised with slightest upward pressure
- For proper assembly, do not remove bottom screw (Figure B)
- 2" swivel casters allow for easy maneuverability

PRODUCTS

Description

AL-74881	Overbed Table,Dlx.Non-Tilt,1/cs
AL-74883	Overbed Table,SilverVein,Dlx.,1/cs

SPECIFICATIONS

Description

Base Dimensions	15.5" (D) x 26.5" (W)
Carton Shipping Weight	24 lbs.
Height Adjustable	28" - 45"
Tabletop Surface Dimensions	15" (D) x 30" (W)
Warranty	Limited Lifetime
Weight	21 lbs.
Weight Capacity	40 lbs

PARTS

Description

Call	Caster Plug, 4/bx, BX
Call	HardwarePack 1ea, EA
Call	Column Only,1/ea, EA
Call	Elevating Hndle Assm.1/ea, EA
Call	Caster,Overbed table.1/ea, EA
Call	Caster w/Lock,1/ea, EA
Call	Base Over Bed Table,1/ea, EA
Call	Adjustable Mast, 1/ea, EA
Call	TableTop w/Bracket 1ea, EA