



Foot Stool  
**AL-74753**

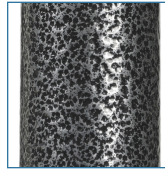


FIGURE A

- Steel-welded silver vein construction (Figure A)
- Non-skid ribbed rubber platform
- Reinforced rubber tips

**PRODUCTS**

**Description**

AL-74753	Foot Stool,Dlx.SilverVein,1/cs
----------	--------------------------------

**SPECIFICATIONS**

**Description**

Carton Shipping Weight	7 lbs.   14 lbs.
Overall Dimensions	17" (W) x 13" (D)
Step Height	9"
Step Surface	14" (W) x 11" (D)
Warranty	Limited Lifetime
Weight	5 lbs.
Weight Capacity	300 lbs