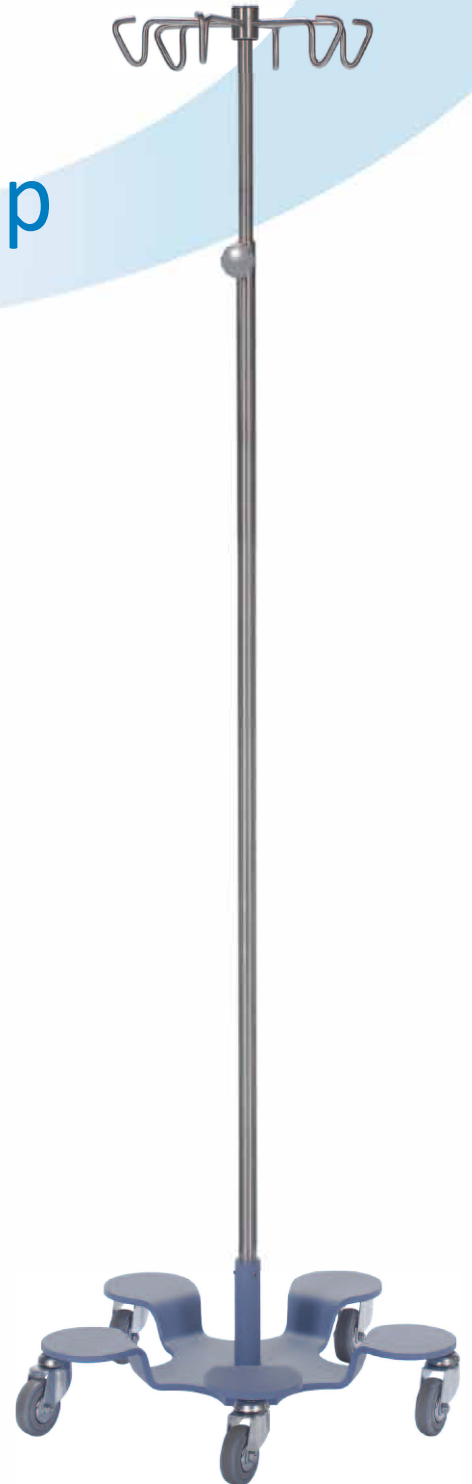


ALCO[®]
Sales & Service Co.

infusion pump
stand

AL-69442A



*i***S TAND**TM

800-323-4282

Pole

Stainless steel resists staining, corrosion and rusting.

Brass Bushing

Provides smooth operation while reducing galling and wear.

Infusion Pump Hoop

Measures 29"H x 19"W and allows for multiple pumps to be installed. Made from one inch stainless steel tubing or CuVerro® antimicrobial copper alloy. The hoop allows for rotational and vertical adjustment.

Base

Low center of gravity design and 27 lbs. base offers improved stability.

Footprint - 23"

Small footprint reduces stumbles and falls while patient ambulates.



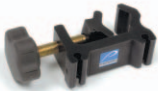
features

- Accommodates up to six infusion pumps.
- Bag Drop Prevention Device allows for controlled descent of pole.
- Stainless steel pole and hooks.
- Adjustable height from 69" to 124". Highest in the industry!
- Heavy duty 3" sealed casters.
- Extremely durable powder coat finish base.
- Pole sleeve welded securely to the base for reinforced stability.

AL-69442A

Call for accessories!

Accessories



Universal Clamp

Required for mounting most accessories



Patient Handle

For easy mobility
includes Universal Clamp



Wire Basket

includes Universal Clamp



Multiple Pump Holder

Infusion pump holder

includes Universal Clamp



IV Set Organizer

Also holds secondary bags



Outlet Strip

Hospital grade

includes Universal Clamp



O₂ Holder

Holds E-size oxygen tanks

includes Universal Clamp



Foley Hook

includes Universal Clamp
Factory installed