

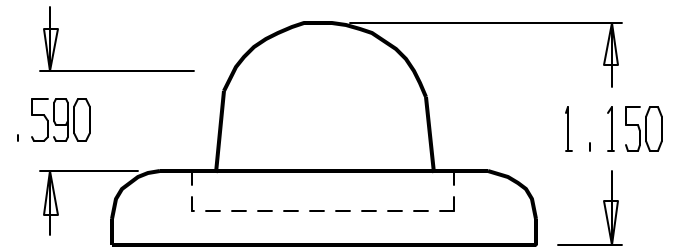
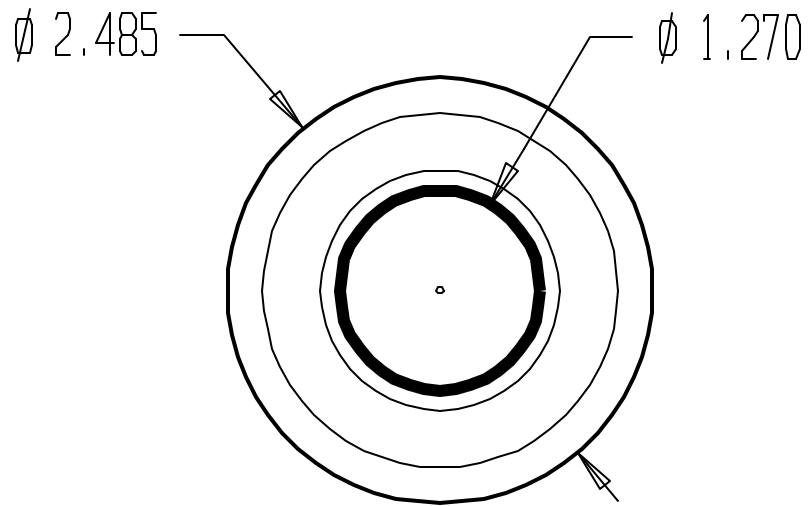
AL-60706 | AL-60707

Product Specifications



Finishes	AL-60706 Polished Brass; AL-60707 Satin Chrome
Type of Stop	Wall Bumper
ANSI	L22101, L52101
Shelf Pack	50
Material	Wrought
Fasteners	1 ea. #8 x 1-1/4" SMS, 1 ea. Plastic Anchor & Plastic Drywall Anchor
Projection	1-1/8"
Diameter	2-1/2"

REVISIONS			
ZONE	REV	FINISHES :	DATE
		605, 606, 612, 613, 625, 626, 630	
			APPROVED



ALCO
Sales & Service Co.

DESIGNER	SIZE	DATE:	PART NO.	REV
	A	2/19/04	AL-60706, 60707	
APPROVED	SCALE	RELEASE DATE	WEIGHT	SHEET