

Synthesis

Transport Wheelchair
AL-89251

ALCO
Sales & Service Co.



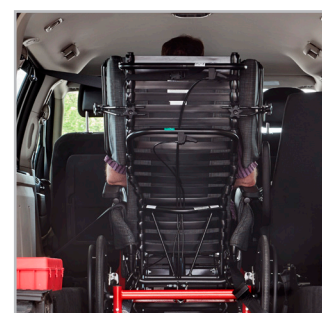
*Crash-tested and WC-19
compliant for vehicle transport*



*Easy to load in a variety of
vehicles*



*Brackets enable safe patient
transport between locations*

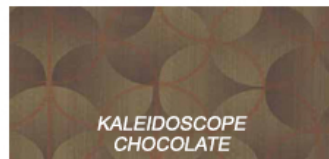
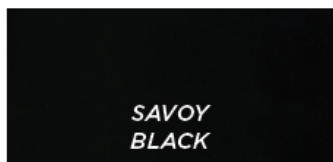
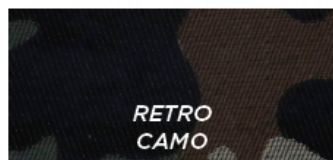


*Tilts for in-transit contentment
and safety*

Patient, Facility, & Caregiver Benefits

- Increases quality of life and engagement with surroundings
- Promotes safe patient handling with enhanced positioning
- Proper seating alignment reduces patient fatigue and discomfort

UPHOLSTERY OPTIONS

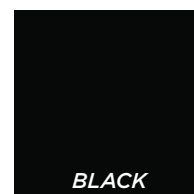
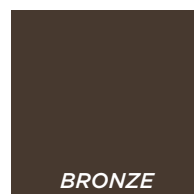
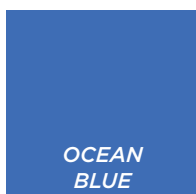


Comfort & Safety on the Go

SPECIFICATIONS

Degrees of Tilt	Up to 40°
Degrees of Recline	Up to 90°
Weight Capacity	Up to 350 lbs. (158 kg)
Seat Widths	16", 18", 20" (40cm, 45cm, 50cm)
Seat Depths	17" (43cm)
Floor-to-Seat Heights	20.5" (52cm)
Wheels	5" (12cm) Aluminum Non-locking Front Casters 20" (35cm or 50cm) Rear Mags
Warranty Frame	10 years on 16 Gauge tubular steel frame
Pressure-Reducing Seat & Backrest	Integrated with Comfort Tension Seating®
Standard Padding	Headrest, Shoulder Bolsters, Lower Side Pads, Seat & Back Pad with Cover

FRAME OPTIONS



Additional accessories available: foot supports, specialty padding packages, trays, and positioning straps