

The Endurance

All Purpose Wall Mount Shelf



ITEM	DESCRIPTION
AL-89243-01BK	Black FR
AL-89243-01BLG	Blue Gray FR
AL-89243-01BR	Brown FR
AL-89243-01BU	Burgundy FR
AL-89243-01GR	Green FR
AL-89243-01GY	Grey FR
AL-89243-01SBL	Slate Blue FR
AL-89243-01SD	Sand FR

FEATURES:

- Molded in shelving for open storage of personal items.
- Durable, one piece, rotationally molded design for increased strength. Constructed of high impact “no break” polyethylene. No steel or wood components.
- Stain resistant.
- Bolt to the wall via concealed pilot holes with hardware of your choice.
- Easy to clean and maintain.
- Flame Retardant (passes Cal 133). Test reports available upon request.
- Manufactured to ISO Quality Standards in the USA.

Available in



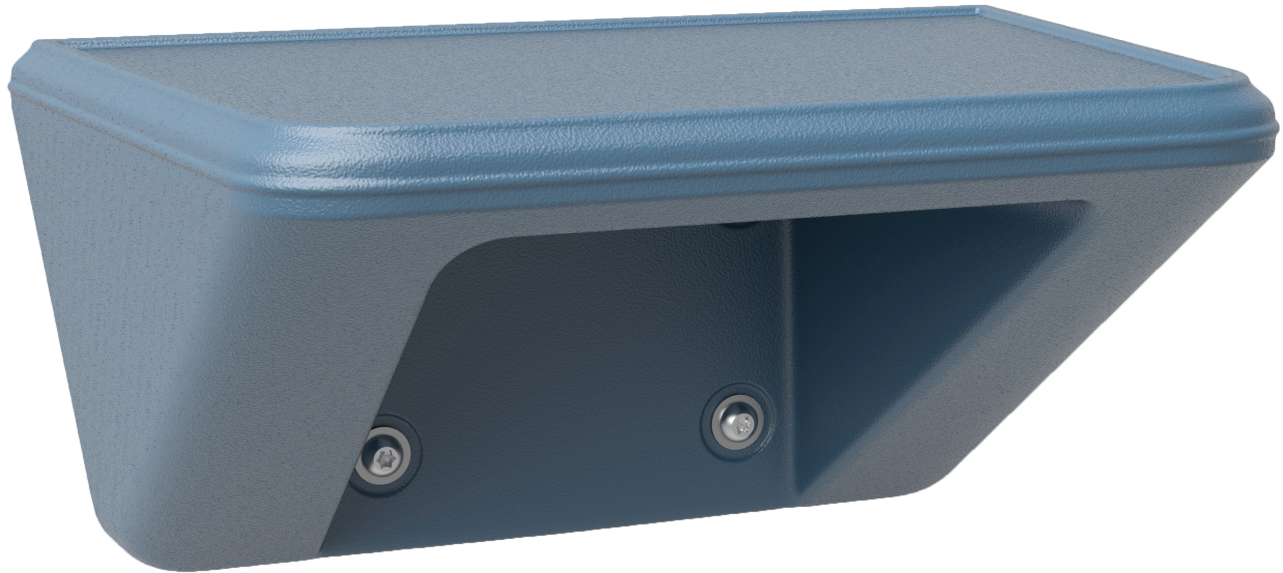
Custom colors available upon request. Call for details.

Ideal For Use In: Correctional Facilities, Behavioral/Mental Health Facilities & Law Enforcement/Security.


The Endurance

All Purpose Wall Mount Shelf/Step 2.0

AL-89243-02



FEATURES:

- Open storage for personal items.
- Durable, one piece, rotationally molded design for increased strength. Constructed of high impact “no break” polyethylene. No steel or wood components.
- Stain resistant.
- Bolt to the wall via concealed pilot holes with hardware of your choice.
- Easy to clean and maintain.
- Flame Retardant (passes Cal 133). Test reports available upon request.
- Manufactured to ISO Quality Standards in the USA. 



ITEM	DESCRIPTION
AL-89243-02BK	Black FR
AL-89243-02BLG	Blue Gray FR
AL-89243-02BR	Brown FR
AL-89243-02BU	Burgundy FR
AL-89243-02GR	Green FR
AL-89243-02GY	Grey FR
AL-89243-02SBL	Slate Blue FR
AL-89243-02SD	Sand FR

Available in



Custom colors available upon request. Call for details.

Ideal For Use In: Correctional Facilities, Behavioral/Mental Health Facilities & Law Enforcement/Security.