

# Geo-Mattress® Pro

## Pressure Redistribution Foam Mattress



### Geo-Mattress Pro®

*Affordability and effectiveness*

Single layer, zoned construction delivers excellent value for budget-conscious facilities.

- 5 years, non-prorated warranty
- Weight limit: 300 lbs.

Flammability Protection: Certified conformance to NFPA 101 (Life Safety Code); Cal. Tech Bulletin #117; 16 CFR 1632 and 1633; and BFD IX-11.

### Primary Use:

- Prevention of Skin Breakdown

### Patient Indications:

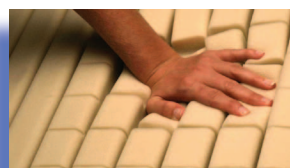
- General patient population
- Moderate – High Risk for skin breakdown (e.g., Braden 13-26)
- Decreased mobility
- Repositions frequently by self or caregiver

### Key Advantages:

- Geo-Matt® anti-shearing surface
- Heel Slope™
- Hidden zipper for infection control

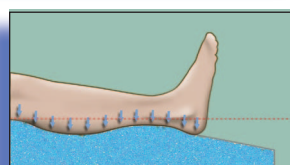
Item #	Description
AL-85757-05	84" L x 35" W x 6" H
AL-85757-04	80" L x 35" W x 6" H
AL-85757-01	75" L x 35" W x 6" H

### Packed with value-added features:



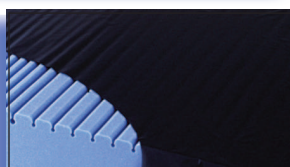
#### Segmented Geo-Matt® Design.

Clinically proven Geo-Matt® design creates a unique, anti-shearing top surface. 800 individually responsive cells in distinct head, torso, and foot zones enhance therapeutic support and comfort.



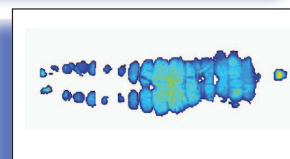
#### Exclusive Heel Slope®.

Subtle taper redistributes load to pressure-tolerant lower legs. Delivers heel pressures 27% lower than flat designs.



#### Fluid-proof, wipe-clean cover

with ultra-low moisture vapor transmission rate (MVTR). Bacteriostatically-treated top, durable tri-laminate bottom. Hidden zipper design for easier, more thorough cleaning and superior infection control.



#### Outstanding pressure redistribution

across the surface ensures low average of peak pressure at vulnerable sacrum and heels.

**ALCO**  
Sales & Service Co.