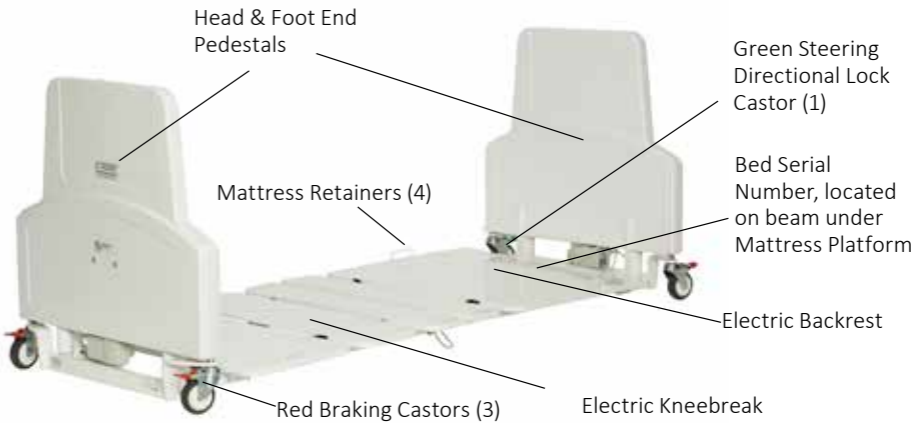


# Assembly Instruction FloorLine LTC

## AL-85307

### Requirements

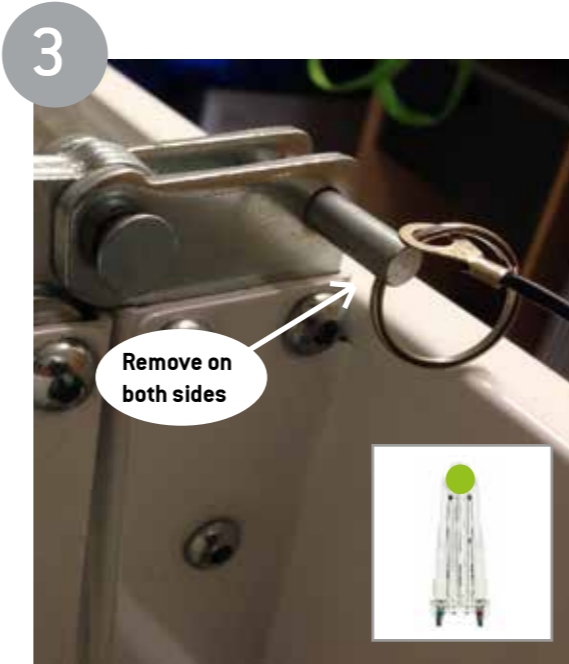
- 1) Mains Power Outlet/Power -point
- 2) 5mm Allen Key for countersunk bolts
- 3) 13mm Spanner/Socket Wrench
- 4) 2 people for assembly



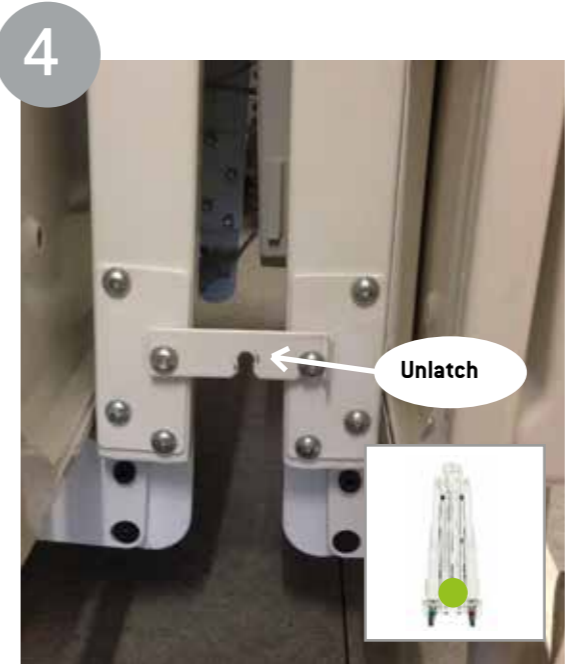
The bed is delivered, folded and packed in one carton with its own handset. Ensure the bed carton is received in the correct upright position, as marked on the carton.



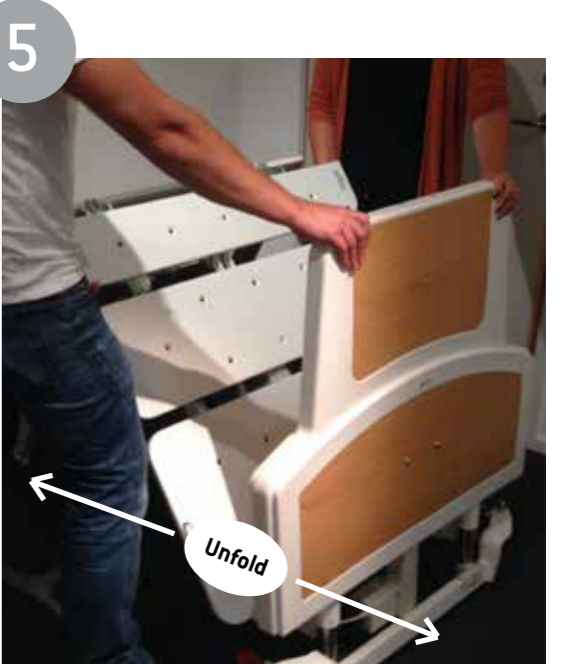
Place Head Pedestal End (the side with the green castor) against a wall. One person must support the bed from prematurely unfolding. The second person uses the 13mm spanner, to remove the two foot end screws.



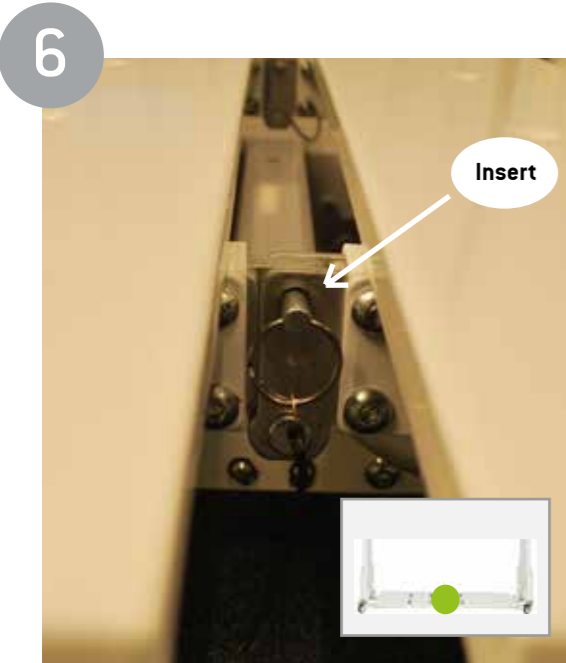
Remove the 2 centre platform lanyard pivot pins (one on either side) of the centre hinge.



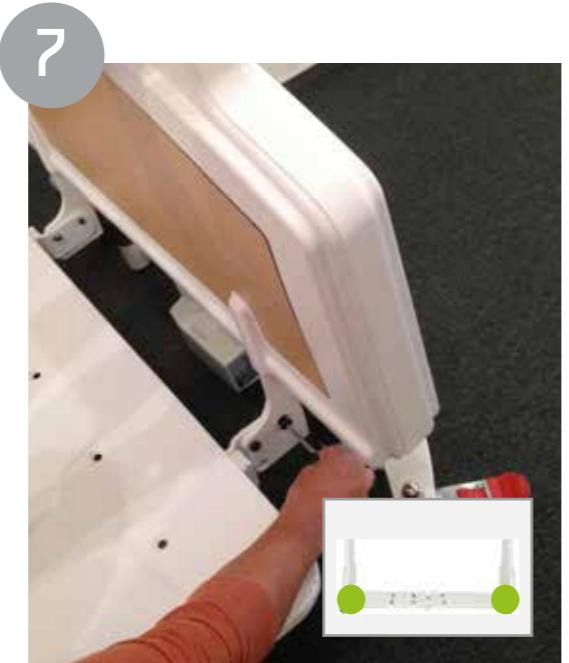
Unlatch the metal transport latch that holds the beams together, located on one side, near the red castors. (One person still supports the bed from unfolding)



Standing either side of the centre section, unfold the mattress platform. **Take care not to trap fingers when unfolding!**



Re-insert the 2 locking lanyard pins, to lock the mattress platform into a flat position.



Raise the Head end and foot end pedestal on each side into an upright position and re-fit the two screws. (2 on each side)



Attach the mattress retainers on both sides of the bed. 2 on each side.



Plug the Mains Power Cable into the Power-Point/Wall Socket and start using the bed. NOTE: Back-Up Battery (if fitted) will take 24 hours to charge, before it can be used.

**ALCO**  
Sales & Service Co.

800-323-4282