

AL-83049

Alternating Pressure - Static Air Mattress Replacement System

Pressure mapping indicates the AL-83049 Pressure Air Convertible Mattress displaces the body with an average pressure of 16.3 mmHg providing outstanding pressure displacement and redistribution to assist in the prevention and treatment of stage I through IV pressure ulcers.



- Closed System (Static Air) can quickly convert to an Alternating Pressure Mattress
 - Eight non-circular cylinders prevent "rolling" or "gapping"* and are fully enclosed in a fiber mesh sleeve and jacket
 - Whisper Air control unit is simple, quiet and set at the optimum 10 minute cycle to eliminate guesswork for the caregiver
 - 2.5" Certi-Pur Hybrid Visco-elastic top layer does not raise body heat as with standard visco-elastic foam
 - DermaPlush Infinite Stretch cover is fluid proof, air-permeable (breathable) and reduces friction and patient shear
- *Rolling or gapping occurs when a resident's arms or bony prominences push between the cylinders that are not properly supported on all sides. This can occur in cylinders that are circular in shape and have no flat bottom to prevent rolling or gapping between cylinders.

Use of the Pressure Air Convertible Mattress will eliminate the need for:

- costly rental and storage of mattresses that are only used on an as needed basis
- moving and transporting mattresses from room to room
- overlays that are low in profile and do not provide adequate support or therapeutic benefit

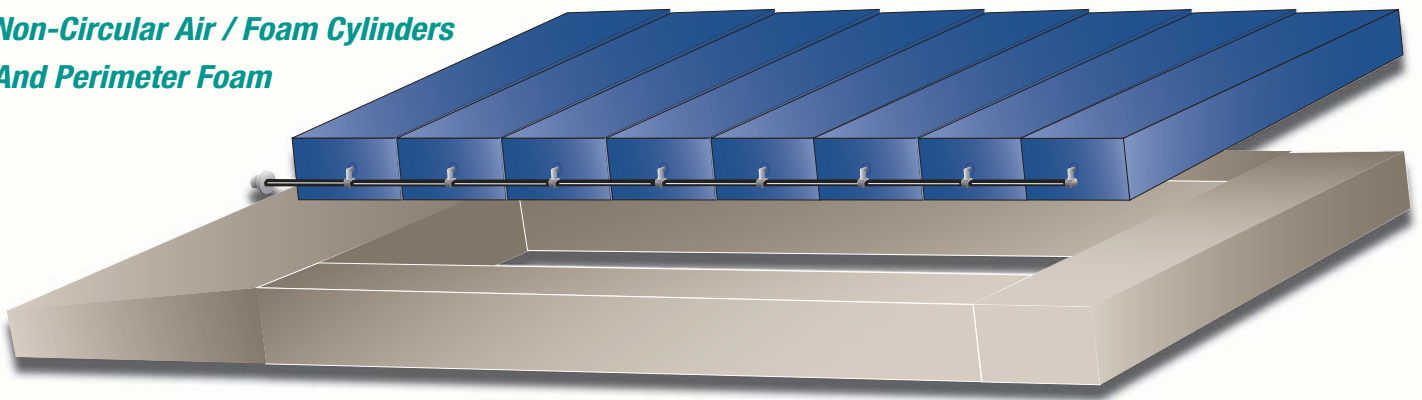
Derma-Plush Cover



*Hybrid Visco Elastic
Top Layer*



*Non-Circular Air / Foam Cylinders
And Perimeter Foam*



Derma-Plush Cover

- Urethane knit synthetic multi-stretch top fabric with non-skid bottom surface and handles
- Permanent fluid barrier with low moisture vapor transmission
- Antimicrobial and antifungal
- Helps reduce patient shear
- Three sided zipper for easy removal and zipper flap for infection control

Hybrid Visco Elastic Top Layer

- 2.5" of Certi-PUR visco-elastic hybrid memory foam
- Latex free, antimicrobial and anti-bacterial
- Nearly eliminates heel pressure with "floating effect" technology
- Provides pressure redistribution of body weight and keeps patient cooler than traditional visco-elastics
- Envelopes around the irregularities of a patient's body without sinking too far into the mattress

Non-Circular Air / Foam Cylinders

- Cylinders filled with air and foam to provide best possible combination of alternating therapy and not bottoming out allowing pressure displacement*
- Eight cylinders alternating air pressure on a ten minute cycle, preventing, reducing and relieving stage I-IV pressure ulcers
- Provides maximum pressure relief and capillary closure at the scapula, sacrum, trochanter (side lying) and legs
- Cylinders will remain static and retain air when hoses connected with out pump

* Pressure can only be displaced with a fluid or a gas, not with foam.

Perimeter Foam Shell

- 4.5" antimicrobial, antibacterial, firm perimeter foam
- Keeps air cylinders in place and firmness allows for better patient egress/ingress
- 5 degree heel slope distributes pressure from the patient's heel onto the legs, assisting with the prevention and the maintenance of pressure ulcers
- Option for raised perimeters (bolsters)

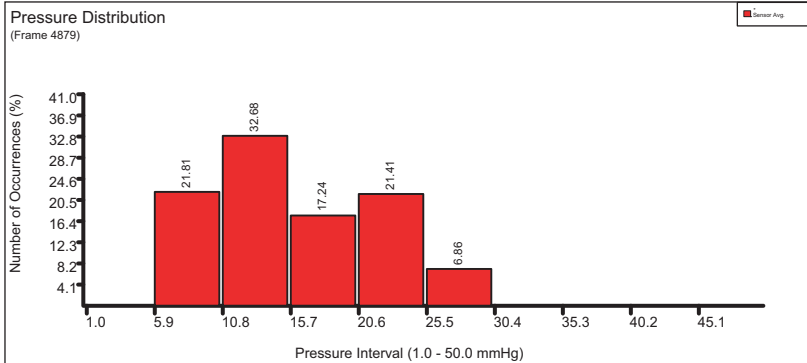
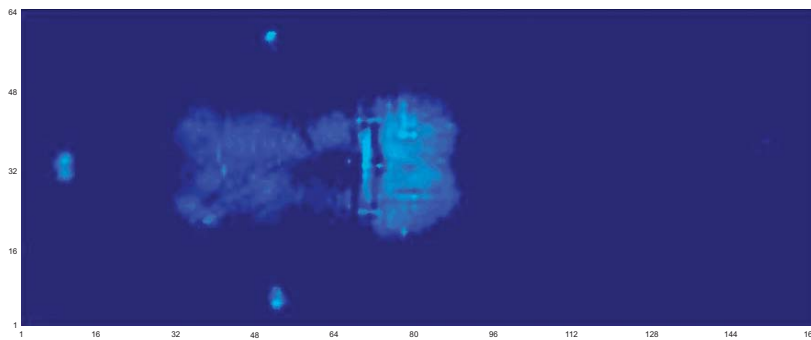
Control Unit

- 10 minute alternating cycle time with output rate at 8 liters of air per minute
- Control knob for alternating pressure relief settings range from minimum to maximum
- Mattress can be used without pump as a static air mattress



XSENSORTM Technology Innovators in Pressure Imaging

File: Pressure Air Convertible
Frame: 4879
Range: 10.0 to 200.0 mmHg
Avg/Peak: 16.3 / 27.4 mmHg
Area: 305.25 in²



mmHg	
50.0	0
48.7	0
47.4	0
46.1	0
44.8	0
43.5	0
42.3	0
41.0	0
39.7	0
38.4	0
37.1	0
35.8	0
34.5	0
33.2	0
31.9	0
30.6	0
29.4	1
28.1	17
26.8	24
25.5	43
24.2	62
22.9	78
21.6	87
20.3	45
19.0	58
17.7	57
16.5	55
15.2	51
13.9	60
12.6	93
11.3	147
10.0	343
0.0	9019
10.0 - 50.0	

Sensor / Group	Value
S0092	
Average Pressure	16.3
Peak Pressure	27.4
Area (in ²)	305.25
General Notes	
Subject	Male
Age	72 years
Height	6' 2"
Weight	217 lb

* Pressure Mapping readings taken from AL-83049 Pressure Air Convertible mattress in static mode using XSENSOR X3 MEDICAL version 6.0

* Patient lying in supine position for 15 minutes while testing

* Over 93% of total body area is mapped with a reading under 23.5 mmHg

* Over 71% of total body area is mapped with a reading under 18 mmHg

* Average pressure is 16.3 mmHg

* Pressure relieving is under 32 mmHg

Pressure Air Convertible Mattress Specifications

- Standard Size: 35" x 80" x 7"
- Custom sizes available including bariatric sizes (42" - 48")
- Maximum weight: 750 lb (340 kg)
- Consult frame manufacturer regarding capacity
- Compliant with 1633, Cal TB 129, ASTM E 1590 and BFDIX-11 (Boston) fire safety regulations
- 5 year warranty on all Pressure Air Convertible mattresses
- Financing options available on all mattresses
- All components are latex free
- SoFlux cover available as an option
- Available with 2" side-bolsters

MADE IN THE U.S.A. 