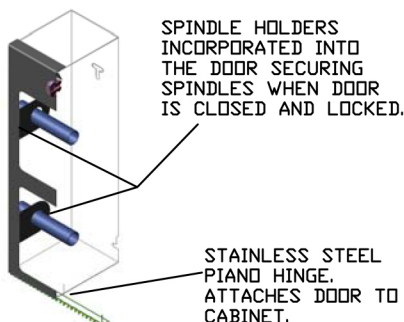
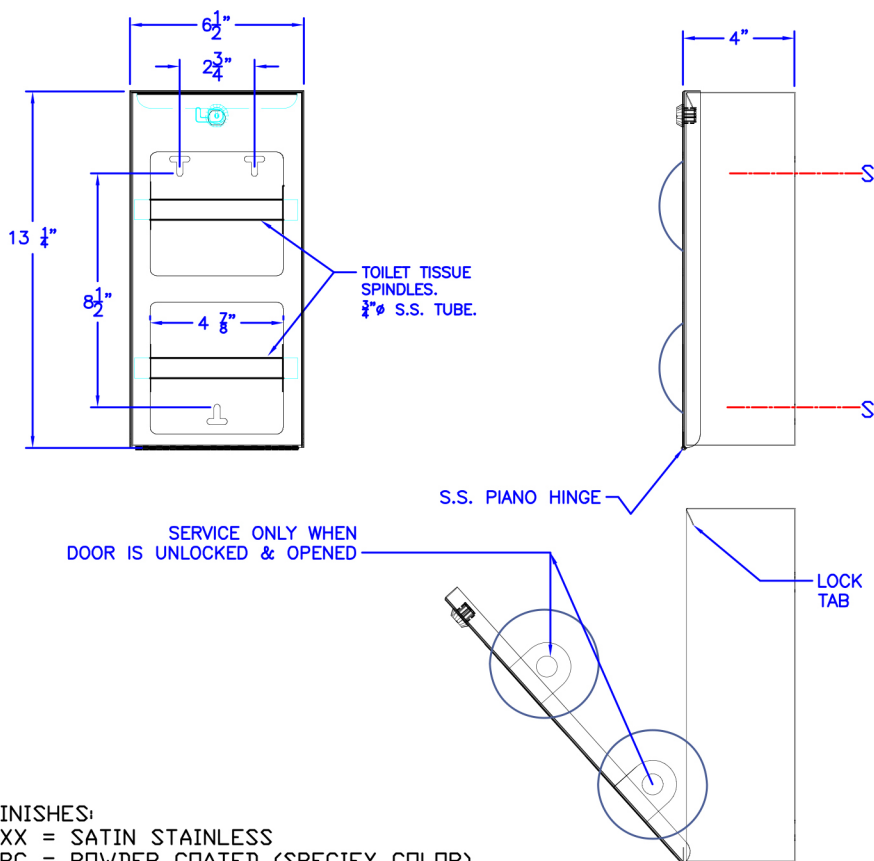
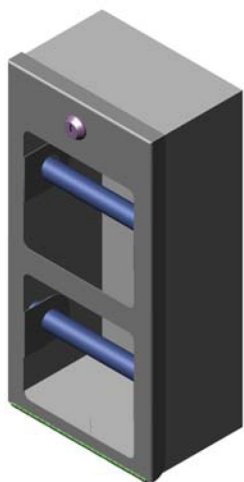


MULTI-ROLL TOILET TISSUE DISPENSER, SURFACE MOUNT



FINISHES:
 -XX = SATIN STAINLESS
 -PC = POWDER COATED (SPECIFY COLOR)

Construction:

CABINET: 22 GAUGE TYPE 304 STAINLESS STEEL, ONE PIECE CONSTRUCTION.
 DOOR: 22 GAUGE TYPE 304 STAINLESS STEEL. FASTEN TO CABINET WITH PIANO HINGE. EQUIPPED WITH TUMBLER LOCK AND KEY.
 SPINDLES: 3/4" X .035 WALL STAINLESS STEEL TUBE. RETAINED IN DOOR WHEN CLOSED AND LOCKED.

Operation:

UNIT HOLDS TWO STANDARD TOILET TISSUE ROLLS UP TO 5 1/4" DIAMETER. TISSUE ROLLS ARE LOADED AND SECURED INSIDE DOOR.
 DEPLETED ROLLS CAN ONLY BE REMOVED AFTER UNLOCKING DOOR.

Installation:

UNLOCK DOOR AND REMOVE SPINDLES.
 USE UNIT AS TEMPLATE TO LOCATE HOLES (3).
 DRILL HOLES AND FASTEN TO WALL USING (3) T-SLOTTED HOLES (FOR #10 SCREW NOT PROVIDED)
 T-SLOTS ALLOW FOR ADJUSTMENT.
 LOAD SPINDLES WITH STANDARD TOILET TISSUE ROLLS & INSERT BACK INTO DOOR SPINDLE HOLDERS.
 CLOSE AND LOCK DOOR.

Guide Specification:

SURFACE MOUNTED MULTI-ROLL TOILET TISSUE DISPENSER CONSTRUCTED FROM TYPE 304 STAINLESS STEEL.
 (2) THEFT-RESISTANT STAINLESS STEEL SPINDLES HOLD STANDARD TOILET TISSUE ROLLS UP TO 5 1/4" DIAMETER.
 TUMBLER LOCK AND KEY ALLOWS FOR SERVICE OF DEPLETED ROLLS.
 DOOR SECURED TO CABINET AND PIVOTS OPEN WHEN UNLOCKED FOR SERVICE.
 FINISHES ARE AS LISTED. POWDER COATED COLORS ARE AVAILABLE- SPECIFY COLOR.