

AL-60712 | AL-60713

Product Specifications



Finishes	AL-60712 Polished Brass; AL-60713 Satin Chrome
Type of Stop	Floor Stop
ANSI	L12141
Shelf Pack	20
Material	Cast Brass
Fasteners	1 ea. 1/4-20 x 1-1/4" MS, 1-3/4" 1/4" x 1-1/4" SMS, 1 ea. Plastic Anchor and 1 ea. Lead Expansion Shield
Height	1"
Diameter	1-3/4"
Base	1/8"

DWG NO

SH

REV

REVISIONS

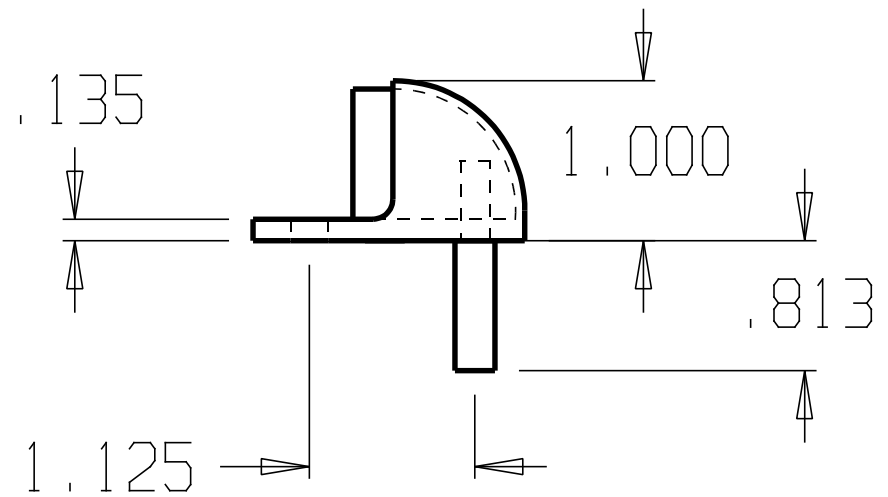
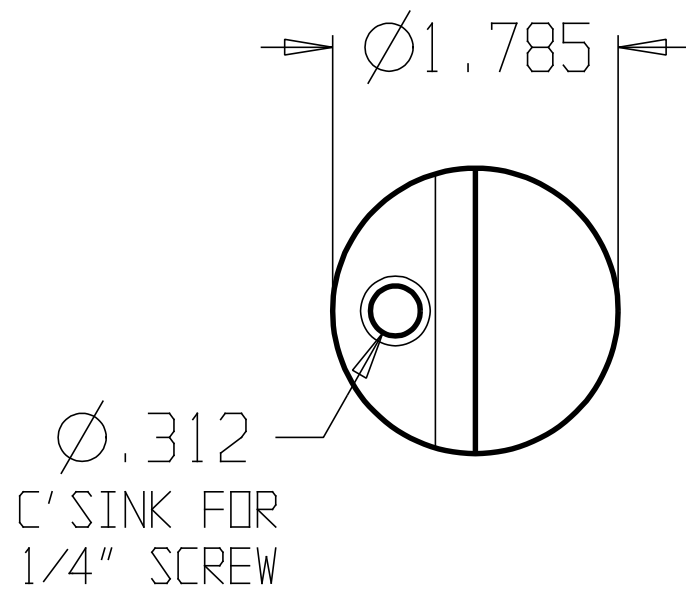
ZONE

REV

FINISHES: 605,606,612,613,
619,620,625,626

DATE

APPROVED

**ALCO**
Sales & Service Co.

DESIGNER

APPROVED

SIZE

A

DATE:

2/19/04

PART NO.

AL-60712, 60713

REV

SCALE

RELEASE DATE

WEIGHT

SHEET