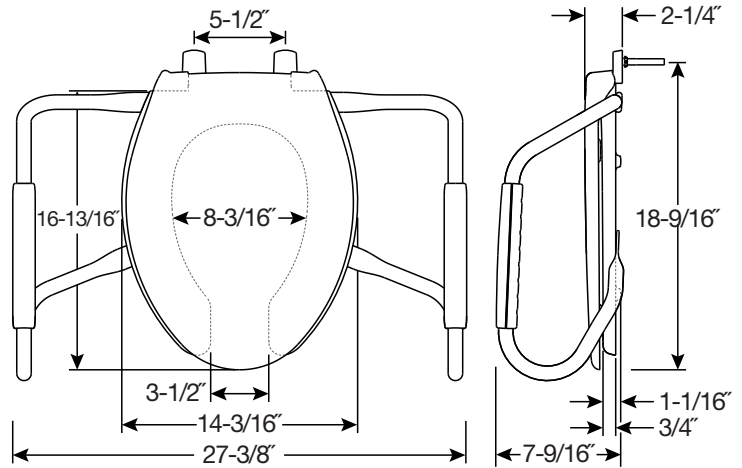
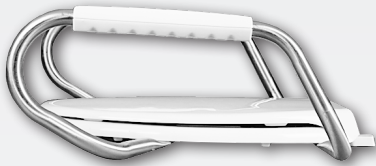


## AL-40545

MEDIC-AID<sup>®</sup> HEAVY-DUTY  
PLASTIC TOILET SEAT



### FEATURES:

- **STA-TITE<sup>®</sup> Commercial Fastening System<sup>™</sup>**  
Eliminates callbacks for loosened seats
- **DuraGuard<sup>®</sup> Antimicrobial \***  
Built-In Seat Protection<sup>™</sup>
- **Medic-Aid<sup>®</sup> Side Arms**  
ADA tested stainless steel safety side arms with contoured plastic grips

*\* DuraGuard Antimicrobial does not protect users against bacteria, viruses, or other disease organisms. Always clean and wash this product thoroughly before and after each use.*

### SPECIFICATIONS:

**Size:** Elongated

**Material:** Plastic

**Style:** Open Front with Cover

**Ring Bumpers:** Four

**Hinges:** Plastic with Non-Corroding 300 Series Stainless Steel Posts and Pintles

**Hardware:** STA-TITE<sup>®</sup> Commercial Fastening System<sup>™</sup>

**Side Arms Weight Capacity:** ADA tested to 250 lbs



Complies with  
IAPMO/ANSI Z124.5  
Performance Standards  
Heavy-Duty Commercial

**Codes & Standards:**



Proudly Made in the USA

Eco-Friendly

