

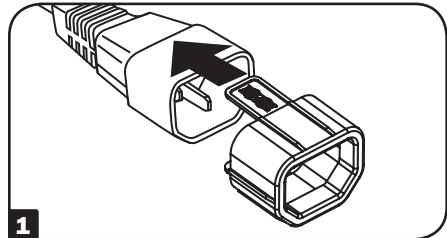
# Instruction Sheet

## AL-84063 PLUG LOCK INSERT AL-84064 PLUG LOCK INSERT

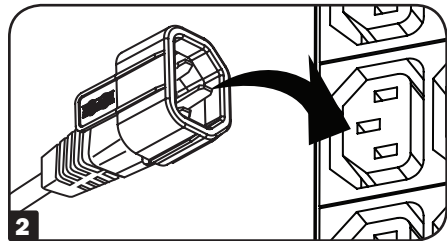
### Installation/Removal

These plug lock inserts are intended for use with C14 and C20 equipment plugs.

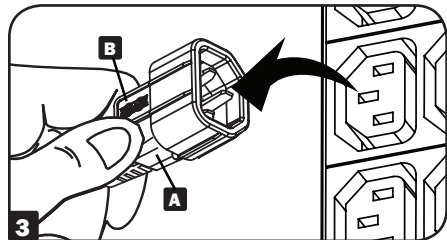
- 1** Place the plug lock insert over the input end of a C14 or C20 equipment plug.



- 2** Securely connect the C14 or C20 equipment plug to a C13 or C19 power source.



- 3** To disconnect the equipment plug from the power source, grip the plug **A** and plug lock tabs **B** simultaneously and then remove them from the power source.



Save the plug lock insert as it is designed for repeated use.