

- The Standard of the Industry and the first recliner specifically designed to improve the comfort and mobility of residents in extended care facilities. The Three Position Recliner easily adjusts into any one of three positions: sitting, TV or full recline. Recliners offer numerous therapeutic benefits including position changes that can aid in circulation and ease discomfort from respiratory, heart and other ailments.
- A position lock allows only the caregiver to secure the chair in any one of the three easily attained positions. Recliner encourages natural relaxation and improved blood circulation.
- Maximum Weight Capacity: 250 lb EVENLY DISTRIBUTED

### Warranty

Welded Frame: Lifetime Warranty (Defined as Ten (10) Years)

Mechanical Components: Three (3) Years

Upholstered Components: One (1) Year

- The molded activity table can be fixed in position or left unsecured for easy exit from the recliner.
- Ergonomically designed seat and back with varied density foam construction provides correct support. Articulating headrest quickly adjusts to maximize individual comfort requirements.
- For safer, easier transport, the Three Position Recliner features two, four inch swivel casters with wheel locks and five inch fixed front wheels.
- Durable welded steel epoxy coated frame is easy to clean and maintain.

Casters: One (1) Year

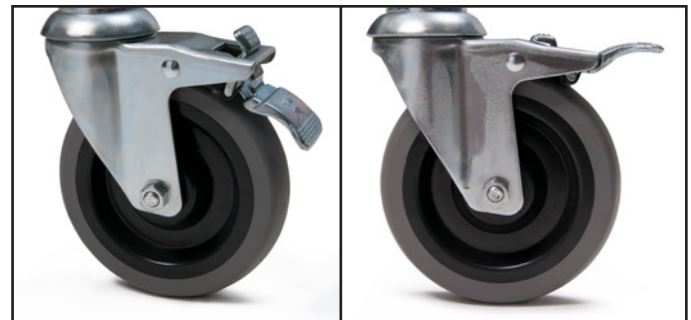
\*Subject to Warranty Statement Limitations



Available Colors*		UOM
	Vintage Gold	1 ea
	Warm Taupe	1 ea
AL-42661-427	Blue Ridge	1 ea
	Imperial Blue	1 ea
AL-42661-454	Royal Blue	1 ea
AL-42661-851	Doe Skin	1 ea
	Jade	1 ea
AL-42661-863	Rosewood	1 ea



\* FR models are Fire Rated Colors (Meets California Technical Bulletin 133 Flammability Standards)



Locked

Unlocked